

**1 Bed
Apartment
located in**



sincere
PROPERTY SERVICES

Lorne Court 2A Lorne Road London E17 7PX



1



1



1



C

£1,550 Per Month

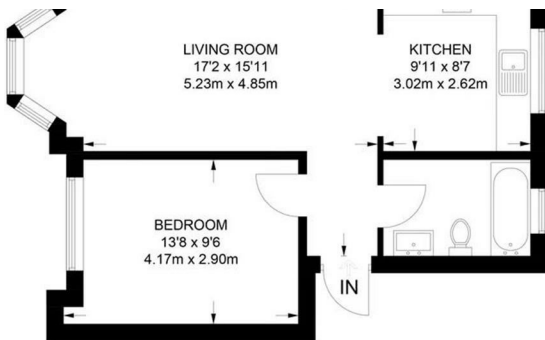
Refurbished 1 Bedroom Ground Floor Flat - Lorne Court, Lorne Road, Walthamstow E17 7PX

Sincere Lettings are pleased to offer this beautifully refurbished ground floor 1-bedroom flat, finished with stylish interiors throughout. Located on a quiet residential street just moments from excellent transport links and Walthamstow's thriving local amenities.

- Recently refurbished to a modern standard
- Open Plan living
- Contemporary fitted kitchen
- Sleek bathroom suite
- Wooden flooring throughout
- Ground floor with easy access
- Ample storage and natural light

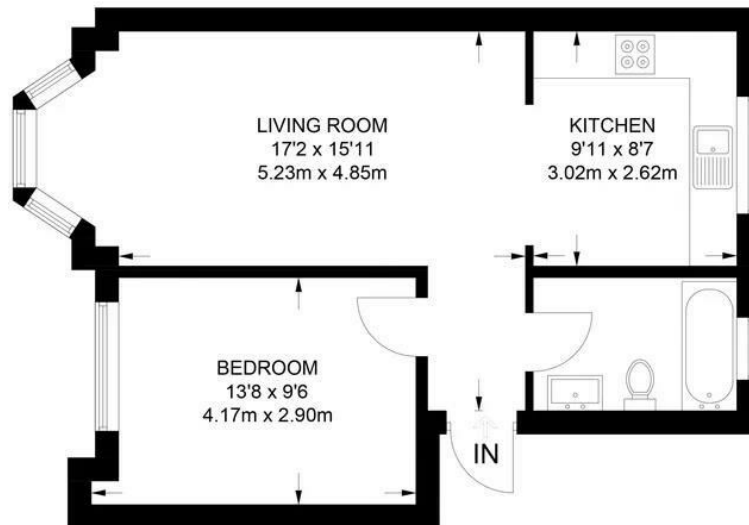
Location:

Perfectly positioned close to Walthamstow Central and Queens Road, offering fast connections into Central London. A great selection of shops, cafes, and amenities can be found nearby





Lorne Court 2A Lorne Road, London, E17 7PX



GROUND FLOOR

APPROXIMATE GROSS INTERNAL AREA
484 SQ FT / 45.0 SQ M

This plan has been drawn for illustrative and identification purposes only.

Energy Efficiency Rating		
	Current	Potential
Very energy efficient - lower running costs		
(92 plus) A		
(81-91) B		
(69-80) C	76	
(55-68) D		
(39-54) E		
(21-38) F		
(1-20) G		
Not energy efficient - higher running costs		
England & Wales		EU Directive 2002/91/EC

DIRECTIONS

CONTACT

252 Hoe Street
London
E17 3AX

E: admin@sincerelettings.co.uk

T: 02085200425

www.sincerelettings.co.uk

